



# MONTHLY MEMBERSHIP PROGRESS REPORT

District 1 D

Results as of: 2/28/2017

GMT: THOMAS MATNEY

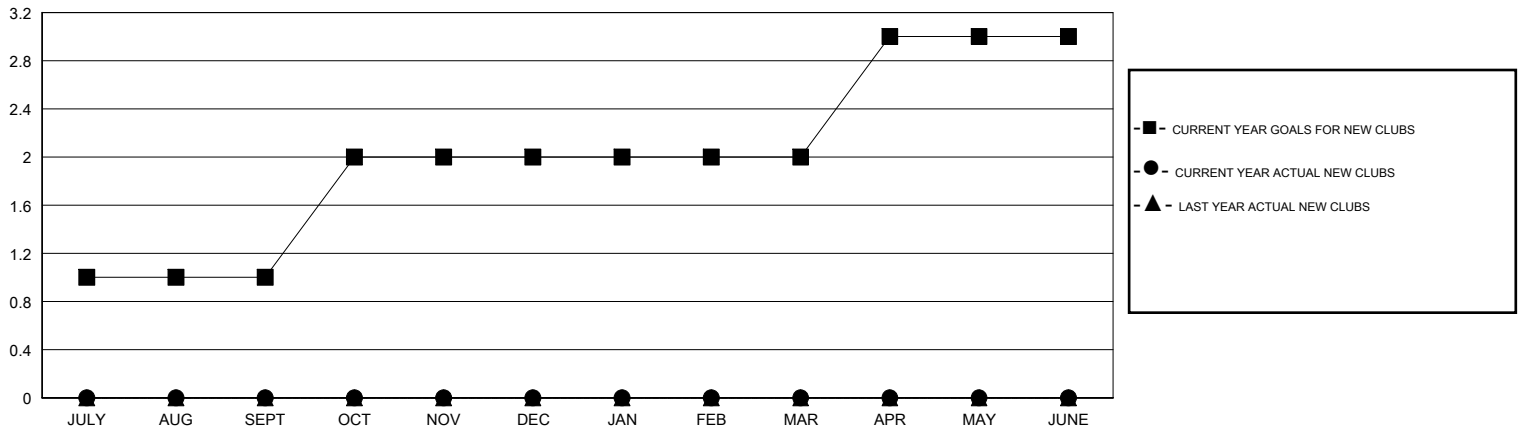
LOCATION ILLINOIS

GMT CA

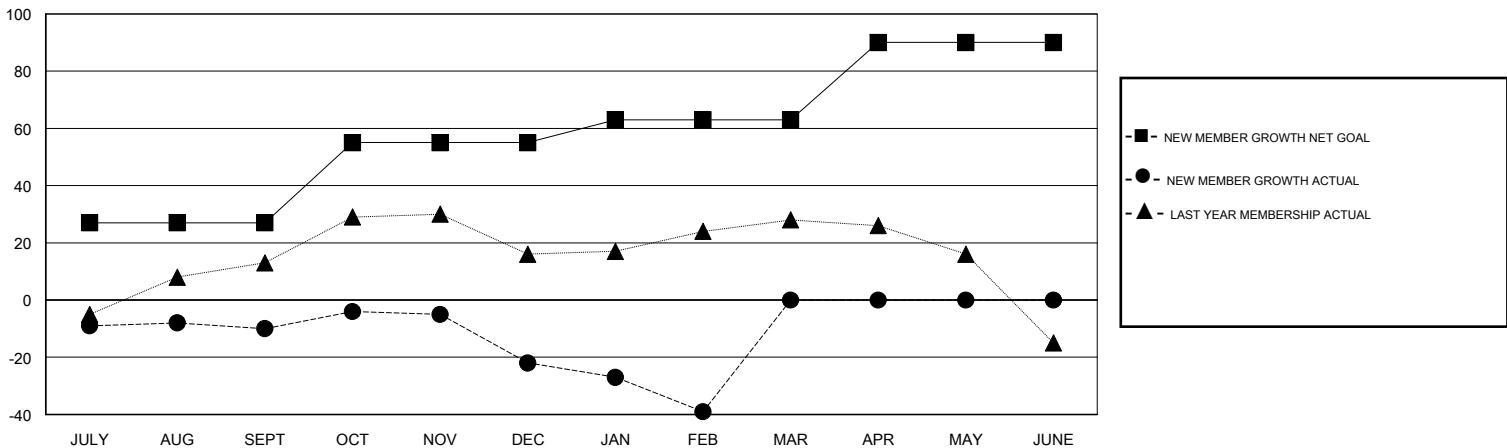
Clubs			
RESULTS FOR 2016-2017			
QUARTER	NEW CLUB GOAL	NEW CLUBS	DROPPED CLUBS
JULY/AUG/SEPT	1	0	0
OCT/NOV/DEC	1	0	0
JAN/FEB/MAR	0	0	0
APR/MAY/JUNE	1	0	0

Members			
RESULTS FOR 2016-2017			
QUARTER	NEW MEMBER GROWTH NET GOAL (not reinstated or transfers)	NEW MEMBER GROWTH ACTUAL (not reinstated or transfers)	DROPPED MEMBERS ACTUAL (including transfers)
JULY/AUG/SEPT	27	38	48
OCT/NOV/DEC	28	30	42
JAN/FEB/MAR	8	19	36
APR/MAY/JUNE	27	0	0

GOALS AND ACTUAL NEW CLUBS CUMULATIVE



GOALS AND ACTUAL MEMBERS CUMULATIVE



DROPPED CLUBS: 0	31 CLUBS OF 54 ADDED 1 OR MORE NEW MEMBERS	<u>GENDER DISTRIBUTION</u>	
DROPPED MEMBERS		MALE	1,378 (76.39%)
DECEASED	17	FEMALE	426 (23.61%)
CLUB CANCELLED	0	TOTAL FAMILY UNIT MEMBERS	
OTHER	109	320	
TOTAL	126	FAMILY MEMBERS PAYING HALF DUES	
		162	

[CLICK HERE FOR CUMULATIVE MEMBERSHIP DATA](#)